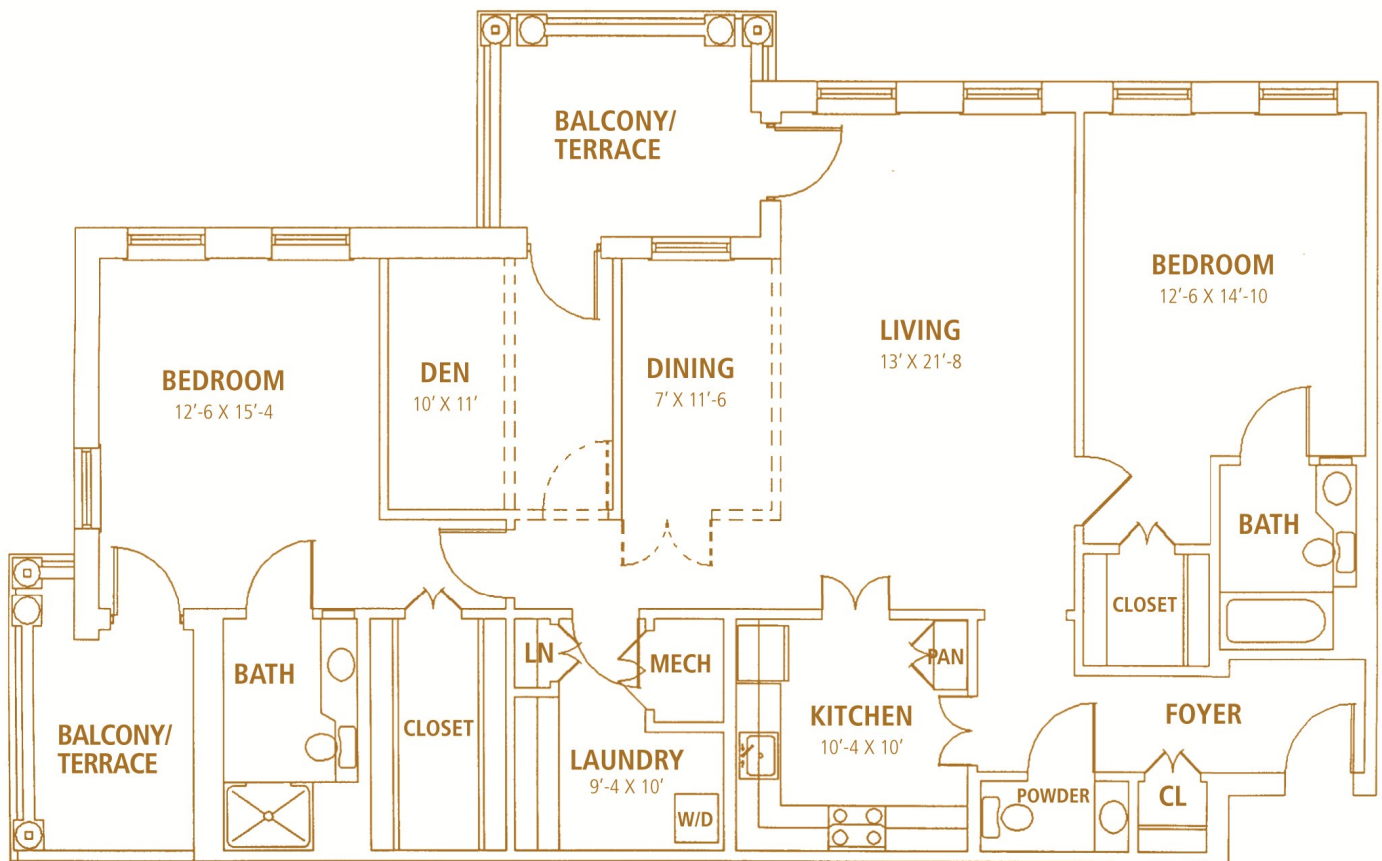


BISHOP GADSDEN



the MAGNOLIA APARTMENT



Our residents often describe this floor plan as 1,540-square-feet of "elegant living space," and we tend to agree. Designed for those who enjoy having plenty of room, the Magnolia features two spacious patios or balconies, with one situated off the master suite. The generous foyer flows into a light, airy living and dining room with an option for a separate study.