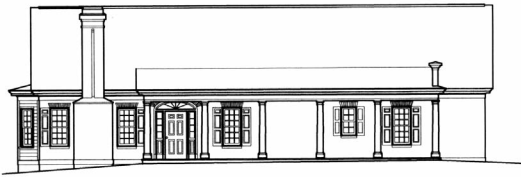
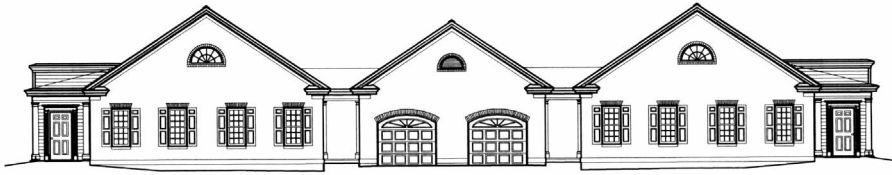


# C O T T A G E S

## *the* ASHLEY



With 1,854 square feet, the Ashley has an exceptionally large living/dining area designed to command a sweeping view of the water amenities on the property. There is a private porch entry, as well as a breezeway entrance from the attached garage.

A den located directly across from the kitchen may also be used as a formal dining room. As in all the Bishop Gadsden homes, the addition of custom features can transform the designated function of any given room.

